

FALL 2020



LEE COUNTY ELECTIONS

A MESSAGE FROM TOMMY...

I would like to express gratitude to my staff, election support staff, and poll workers for a successful Primary Election. We would not be able to conduct elections without the dedicated service of these individuals and their commitment to providing the citizens of Lee County with a superior voting experience!

In the August Primary, 74% of the votes cast were by mail, reaffirming that voting by mail continues to be the preferred, convenient, and safest way to cast your vote in Lee County. If you have not yet requested your Vote-By-Mail ballot, I highly recommend you do so now!

Once you receive your Vote-by-Mail ballot, you are not required to vote and return it if you decide you want to vote in person. However, consider it a back-up plan to provide you with a guaranteed method to cast your vote. In the event an emergency arises, and you are not able to vote in person during the Early Voting period, or at the polls on Election Day, you still have the option of using your Vote-by-Mail ballot to cast your vote. The deadline to request a Vote-by-Mail Ballot is 5:00 p.m., Saturday, October 24.



INSIDE
THE ISSUE

A MESSAGE
FROM TOMMY

ELECTION RECAP

VOTING BEFORE
ELECTION DAY

ELECTION
SPOTLIGHT

PROTECT
THE VOTE

CONTINUED...

To request your ballot, call 239-533-8683 or go online at www.lee.vote. It is essential to include contact information such as a telephone number or email address when submitting your request in the event we need to contact you about your ballot.

Here are some tips to ensure your vote-by-mail ballot counts:

- **Delivery Address.** Provide the correct address where you want your ballot mailed. The United States Postal Service will not forward your ballot to a different address and will return it to our office as undeliverable mail. If your ballot is returned to us, you will have to request another ballot and could mean that you have less time to vote and return your ballot by the applicable statutory deadline.
- **Receipt Deadline.** Florida law provides that the deadline for the Supervisor of Elections to receive your Vote-by-Mail ballot so that it can be counted is 7:00 p.m., Election Day, Tuesday, November 3. If you plan to return your ballot by mail, we recommend you mail it no later than Saturday, October 24.
- **Signature on Vote-by-Mail Ballot Voter's Certificate.** Make sure you sign the back of the Vote-by-Mail ballot return envelope that contains the Voter's Certificate. Florida law requires that the Supervisor of Elections notify a voter who has returned a Vote-by-Mail ballot that does not include the voter's signature or contains a signature that does not match the voter's signature of record.

Through the notification process, the voter is provided information on how to cure the signature issue and allowed to complete and submit an affidavit to cure any signature deficiencies on their Vote-by-Mail ballot, which is authorized until 5:00 p.m. on the second (2nd) day after the election, Thursday, November 5.

It is important to keep your signature current with our office, as it may have changed through the years. If you wish to update your signature, you may do so by submitting a Florida Voter Registration Application Form to our office.

For those who prefer to vote in person, I encourage you to take advantage of Early Voting. You will avoid large crowds and have the convenience of voting early at any one of 11 sites located throughout Lee County. Early Voting for the November 3 General Election begins Monday, October 19, and continues through Saturday, October 31, from 10:00 a.m. to 6:00 p.m., daily.

CONTINUED...

In response to continued COVID-19 health risks, the same safety precautions utilized in the Primary Election will be applied for the November 3, General Election such as poll workers wearing masks, practicing social distancing, wiping down and sanitizing stations between voters at all Early Voting sites and the polls on Election Day.

When voting in-person, we ask for your understanding and patience. A high voter turnout and carrying out sanitization safety measures may result in increased wait times. Please thank your Poll Workers by the simple courtesy of wearing a mask. Their courage in serving their community during this pandemic makes it possible for you to cast your vote during Early Voting and on Election Day.

My staff and I are committed to preserving the integrity of elections in Lee County through both physical and cybersecurity measures. We have invested in renovating all office locations to ensure the safety and protection of staff, voting equipment, machinery, and internal operations systems.

We maintain strong partnerships with the Federal Bureau of Investigation, Department of Homeland Security, U.S. Elections Assistance Commission, Secretary of State, Florida Division of Elections, Lee County Sheriff's Department, and other local law enforcement agencies.

To ensure the security of our network databases, computer systems, and elections, we use advanced, ongoing high-tech measures, and conduct round-the-clock network monitoring that allows us to review and block inbound network traffic from unidentified threatening countries, foreign agents, or those who would attempt to gain unauthorized access to our network.

Read more about how we prepare for elections in this edition, which contains information to help you have an exceptional voting experience whether you choose to vote by mail, vote in person during Early Voting, or at the polls on Election Day. We strive to ensure we meet our goal to provide superior election services to the voters of Lee County!

Tommy Doyle

AUGUST 18, 2020

PRIMARY ELECTION RECAP

Conducting elections requires months of preparation to ensure all aspects of the elections process are properly executed. Our office managed to effectively prepare for the Primary Election and meet the additional challenges posed by the ongoing health crisis.

A shortage in polling places due to COVID-19 required our office to consolidate several precincts. In an effort to inform voters of changes to polling places, notices were sent in advance to voters in the affected precincts.

Ensuring there were sufficient poll workers to staff all Early Voting sites and polling places on Election Day became an early priority. Successful recruitment through social media and radio advertising helped fill these crucial roles in a timely manner.

Navigating the challenges of properly implementing health protocols for the safety of voters, election workers, and polling place staff required thorough planning. Supervisor of Elections, Tommy Doyle, secured necessary protective equipment in advance to provide a safe and sanitary environment at all polling locations and poll workers were provided with additional procedural training to meet health guidelines for in-person voting.



AUGUST 18, 2020

PRIMARY ELECTION RECAP

Expanding the auditorium and vault room where storage and processing of Vote-by-Mail ballots takes place was a major focus in preparation for the Primary. Renovating was necessary for increased physical security, to accommodate for the expected high volume of Vote-by-Mail, and to allow for greater efficiency in the processing and tabulation of Vote-by-Mail ballots.

The overall voter turnout for the August 18, Primary Election was 31 percent. Lee County saw an increase in Vote-by-Mail, which accounted for 74 percent of the votes cast, and is significantly higher than past Primary Elections.

Many voters took advantage of the secure Vote-by-Mail drop boxes provided at all office locations and at Early Voting sites. Drive-up drop boxes were available at select Early Voting sites to allow for social distancing, as well as a convenient and comfortable way for voters to return their ballots.



Supervisor Doyle addresses Election Support Staff on their first day of Vote-by-Mail processing.



Election Support Staff sort returned Vote-by-Mail ballots by precinct.



Sorted Vote-by-Mail ballots are stored by precinct in a secure vault room before tabulation begins.



A secure Drive-up Vote-by-Mail Ballot Drop Box located at the Lee County Elections Center Early Voting site.

AUGUST 18, 2020, PRIMARY ELECTION STATISTICS

ACTIVE ELIGIBLE VOTERS
468,141

TOTAL BALLOTS CAST
148,340

PERCENT TURNOUT
31.69%

Total Ballots by Type

Type	Ballots Cast	Percent of Ballots Cast
Mail	110,193	74.28%
Early Voting	11,081	7.47%
Election Day	27,017	18.21%
Provisional	49	0.03%

PRIMARY ELECTION COUNTY CANVASSING BOARD

The Canvassing Board for the Primary Election was composed of John R. Adams, County Judge and Chairman of the Board; Brian Hamman, County Commissioner; and Tommy Doyle, Supervisor of Elections. We thank our Canvassing Board for their commitment to serving the voters of Lee County.



In Florida, an elections Canvassing Board (a county judge, county commissioner, and the Supervisor of Elections) is responsible for overseeing all public pretesting of a sample of the tabulation equipment used in an election, examining ballots or groups of ballots, determining voter intent when required by law, compiling election returns, conducting recounts when required by law, determining the official results of an election, certifying an election, and conducting post-election manual audits to check voting system performance.

All Canvassing Board meetings are open to the public. We invite voters to become acquainted with the elections process by attending a Canvassing Board meeting.

VOTING BEFORE ELECTION DAY

We expect a high voter turnout in the upcoming November 3, General Election. COVID-19 has required our office and elections offices across Florida to take necessary, additional safety precautions to ensure health guidelines are met at all polling places. Due to the ongoing health crisis, we strongly encourage voters to consider casting their ballot before Election Day.

REASONS TO EARLY VOTE OR VOTE-BY-MAIL

■ AVOID LARGE CROWDS

- Vote-by-Mail and Early Voting may help you avoid large groups of people at the polls on Election Day.

■ AVOID ANTICIPATED INCREASED WAIT TIMES

- In addition to social distancing, consistent disinfecting of high touch surfaces and voting equipment may create additional wait times when voting in-person on Election Day.

■ BACK-UP PLAN IN EMERGENCY SITUATIONS

- Unforeseen circumstances are not uncommon. Give yourself sufficient time to cast your ballot in the event you cannot make it to the polls on Election Day.

■ MORE THAN ONE DAY OF VOTING TO CHOOSE FROM

- If you prefer to vote in-person, Early Voting offers 13 days of voting prior to Election Day.

■ PRECINCT VOTING IS NOT REQUIRED DURING EARLY VOTING

- On Election Day, you **MUST** vote in your assigned precinct. Early Voting; however, allows you to conveniently vote at ANY Early Voting location during Early Voting dates and times.
- Vote-by-Mail allows you to vote safely and comfortably wherever you are!

■ MORE TIME TO RESEARCH YOUR BALLOT

- A General Election ballot is typically two or more pages. Voting by mail offers more time to read through and understand your ballot.

■ YOUR BALLOT WILL BE ONE OF THE FIRST TO BE COUNTED

- The initial mailing of Vote-by-Mail ballots begins approximately 35 days prior to an election. Tabulation of ballots begins shortly thereafter and continues through to Election Day.

PROTECT THE VOTE 2020!

The undermining of voter confidence in the electoral system is one of the greatest threats to the 2020 General Election. It is our responsibility to do everything within our power to protect your vote. In partnership with the Department of Homeland Security and the National Association of Secretaries of State, we offer you the necessary tools to help you be an informed voter, recognize the facts, and identify misinformation.

#Protect2020 is an initiative developed by the Department of Homeland Security's Cybersecurity and Infrastructure Security Agency (CISA). The initiative focuses on enhancing election security through a variety of methods, including combating disinformation campaigns and working closely with election officials on a national, state, and local level to ensure safe and fair elections.

"The Department views foreign interference as malign actions taken by foreign governments or actors designed to sow discord, manipulate public discourse, discredit the electoral system, bias the development of policy, or disrupt markets for the purpose of undermining the interests of the United States and its allies." (cisa.org)

Take a look at the infographic below, provided by CISA, which illustrates how foreign interference promotes divisiveness and conflict.



CYBERSECURITY AND INFRASTRUCTURE SECURITY AGENCY

THE WAR ON PINEAPPLE: Understanding Foreign Interference in 5 Steps



To date, we have no evidence of Russia (or any nation) actively carrying out information operations against pizza toppings. This infographic is an ILLUSTRATION of how information operations have been carried out in the past to exploit divisions in the United States.

1. TARGETING DIVISIVE ISSUES

Foreign influencers are constantly on the lookout for opportunities to inflame hot button issues in the United States.



They don't do this to win arguments; they want to see us divided.



American Opinion is Split: Does Pineapple Belong on Pizza?

An A-list celebrity announced their dislike of pineapples on pizza, prompting a new survey. No matter how you slice it, Americans disagree on the fruit topping.

2. MOVING ACCOUNTS INTO PLACE

Building social media accounts with a large following takes time and resources, so accounts are often renamed and reused. Multiple accounts in a conversation are often controlled by the same user.

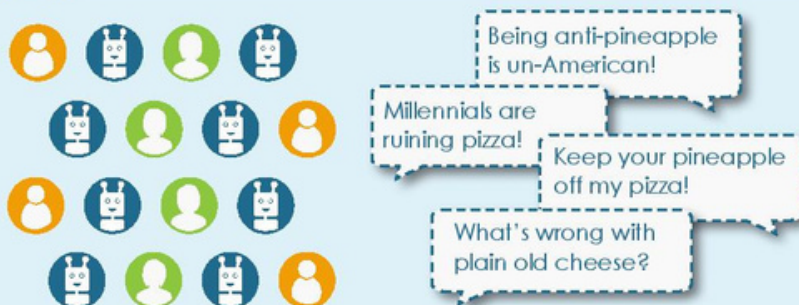
Pro Tip: Look at an account's activity history. **Genuine accounts usually have several interests and post content from a variety of sources.**



3. AMPLIFYING AND DISTORTING THE CONVERSATION

Americans often engage in healthy debate on any number of topics. Foreign influencers try to pollute those debates with bad information and make our positions more extreme by picking fights, or "trolling" people online.

Pro Tip: Trolls try to make people mad, that's it. **If it seems like an account is only aiming to raise tensions, think about whether it's worth engaging.**



4. MAKING THE MAINSTREAM

Foreign influencers "fan the flames" by creating controversy, amplifying the most extreme version of arguments on both sides of an issue. These are shared online as legitimate information sources.

Sometimes controversies make it into the mainstream and create division among Americans. **This is a foreign influencer striking gold! Their meddling is legitimized and carried to larger audiences.**



5. TAKING THE CONVERSATION INTO THE REAL WORLD

In the past, Kremlin agents have organized or funded protests to further stoke divisions among Americans. They create event pages and ask followers to come out.

What started in cyberspace can turn very real, with Americans shouting down Americans because of foreign interference.

Pro Tip: Many social media companies have increased transparency for organization accounts. **Know who is inviting you and why.**



Click on the image above for more information on #TrustedInfo2020.

#TrustedInfo2020, launched by the National Association of Secretaries of State (NASS) is another initiative created in an effort to encourage voters to reach out to their Election Officials as trusted sources for credible election information. Doing so, may "cut down on the misinformation and disinformation that can surround elections." (nass.org)

By working closely with the Department of Homeland Security, the Florida Division of Elections, and other government organizations, our office remains committed to preserving the integrity of elections and protecting your vote.

ELECTIONS SPOTLIGHT!



Congratulations to Cheryl Johnson on her retirement!

Cheryl Johnson retired from the Lee County Supervisor of Elections Office in July. She started in our Cape Coral Branch Office in the infamous election year of 2000 under then-Supervisor, Philinda Young. Cheryl moved to a position in the Main Office not long after that and then went on to become the Voter Registration Director.

Cheryl's career spanned 20 years of elections and all their challenges! She worked the necessary nights and weekends to manage the major hustle and bustle of thousands of voter registration applications that came in prior to voter registration deadlines during major elections. She arrived at the office before dawn and left after dark on every Election Day.

Her retirement plans include spending time with her husband and enjoying the leisurely pace of her days in which to do whatever she wants. Cheryl will be missed by her work family. We wish her much peace, good health, and lots of fun in her retirement!



We are pleased to announce the promotion of Maybety Bonachea, to the position of Voter Registration Director!

Maybety has been with the Lee County Supervisor of Elections since 2013 as a Voter Registration Specialist. Her excellent customer service skills, ability to effectively communicate with voters and coworkers, efficient time management, and genuine desire to help others did not go unnoticed. Maybety moved up to assume more responsibilities in 2015 as Administrative Assistant and transitioned to Voter Registration Director this past August..



We are happy to welcome Tony Ryan, Community Education Services Coordinator, to our team!

Tony brings his years of teaching experience and a positive attitude to all aspects of his responsibilities, including training poll workers. His friendly and welcoming personality are wonderful assets in his position to provide voter education to Lee County's future voters and registered voters.

Tony shared "the most rewarding part of this job is providing voting education to people with disabilities and being a part of a fair and successful election." Tony was born in Miami and raised in Homestead. In his free time, he enjoys working out, fishing, and diving.



DEADLINES

- **MONDAY, OCTOBER 5, 2020**
Deadline to Register to Vote
- **5:00 P.M., SATURDAY, OCTOBER 24, 2020**
Deadline to Request a Vote-by-Mail Ballot to be Mailed

RETURNING A VOTE-BY-MAIL BALLOT

Vote-by-Mail ballots may be returned by mail or hand-delivered.

A Vote-by-Mail ballot must be returned before 7:00 P.M., Election Day.

If you plan to return your ballot in the mail, please do so no later than Saturday, October 24, 2020.

VOTE-BY-MAIL BALLOT DROP BOX AVAILABILITY

If you would like to drop off your Vote-by-Mail ballot in person, you may do so at any office of the Lee County Supervisor of Elections, Monday - Friday, from 8:30 A.M. to 5:00 P.M.

Or, you may drop off your ballot at an authorized, secure drop box located at each Early Voting site, during Early Voting dates and times.

RETURNING A VOTE-BY-MAIL BALLOT ON ELECTION DAY

You or someone you choose may return your ballot to any office of the Lee County Supervisor of Elections, no later than 7:00 P.M. on Election Day.

YOU MAY NOT RETURN YOUR VOTE-BY-MAIL BALLOT AT YOUR POLLING PLACE ON ELECTION DAY.

EARLY VOTING

DATES/TIMES/LOCATIONS

WHEN: 10/19/20 - 10/31/20
10:00 AM - 6:00 PM DAILY

Bonita Springs Elections Office
25987 S Tamiami Trl, #105
Bonita Springs, FL 34134

Cape Coral Elections Office
1039 SE 9th Ave
Cape Coral, FL 33990

Cape Coral - Lee County Library
921 SW 39th Ter
Cape Coral, FL 33914

Dr. Carrie D. Robinson Center
2990 Edison Ave
Fort Myers, FL 33916

East County Regional Library
881 Gunnery Rd N
Lehigh Acres, FL 33971

Estero Recreation Center
9200 Corkscrew Palms Blvd
Estero, FL 33928

Lee County Elections Center
13180 S Cleveland Ave
Fort Myers, FL 33907

North Fort Myers Recreation Center
2000 N Recreation Park Way
North Fort Myers, FL 33903

Northwest Regional Library
519 Chiquita Blvd N
Cape Coral, FL 33993

Riverside Community Center
3061 E Riverside Dr
Fort Myers, FL 33916

Veterans Park Recreation Center
55 Homestead Rd S
Lehigh Acres, FL 33936

BE ELECTION READY 2020

We want you to be informed, prepared, and election ready!
Below is the **Election Ready Checklist** to get you started.



**REGISTER
TO VOTE**

VOTER REGISTRATION
IS UP-TO-DATE WITH:



NAME



ADDRESS



SIGNATURE



PARTY AFFILIATION



**VOTE-BY-MAIL
BALLOT REQUEST**

I HAVE THE
FOLLOWING INFORMATION:



MY PRECINCT NUMBER



MY POLLING LOCATION



MY SAMPLE BALLOT

**MAIN OFFICE
MELVIN MORGAN
CONSTITUTIONAL COMPLEX**
2480 THOMPSON ST, 3RD FLOOR
FORT MYERS, FL 33901

**BONITA SPRINGS BRANCH OFFICE
AT BONITA COMMONS**
25987 S TAMIAMI TRAIL, #105
BONITA SPRINGS, FL 34134

**LEE COUNTY ELECTIONS CENTER
SOUTH FORT MYERS
BRANCH OFFICE**
13180 S CLEVELAND AVE
FORT MYERS, FL 33907

**CAPE CORAL BRANCH OFFICE
LEE COUNTY GOVERNMENT CENTER**
1039 SE 9TH AVE
CAPE CORAL, FL 33990

LEE.VOTE

(239) 533-8683



[LeeCountyElections](#)



[Lee_Elections](#)



[Lee_Elections](#)